

## TURMATTHOF 28

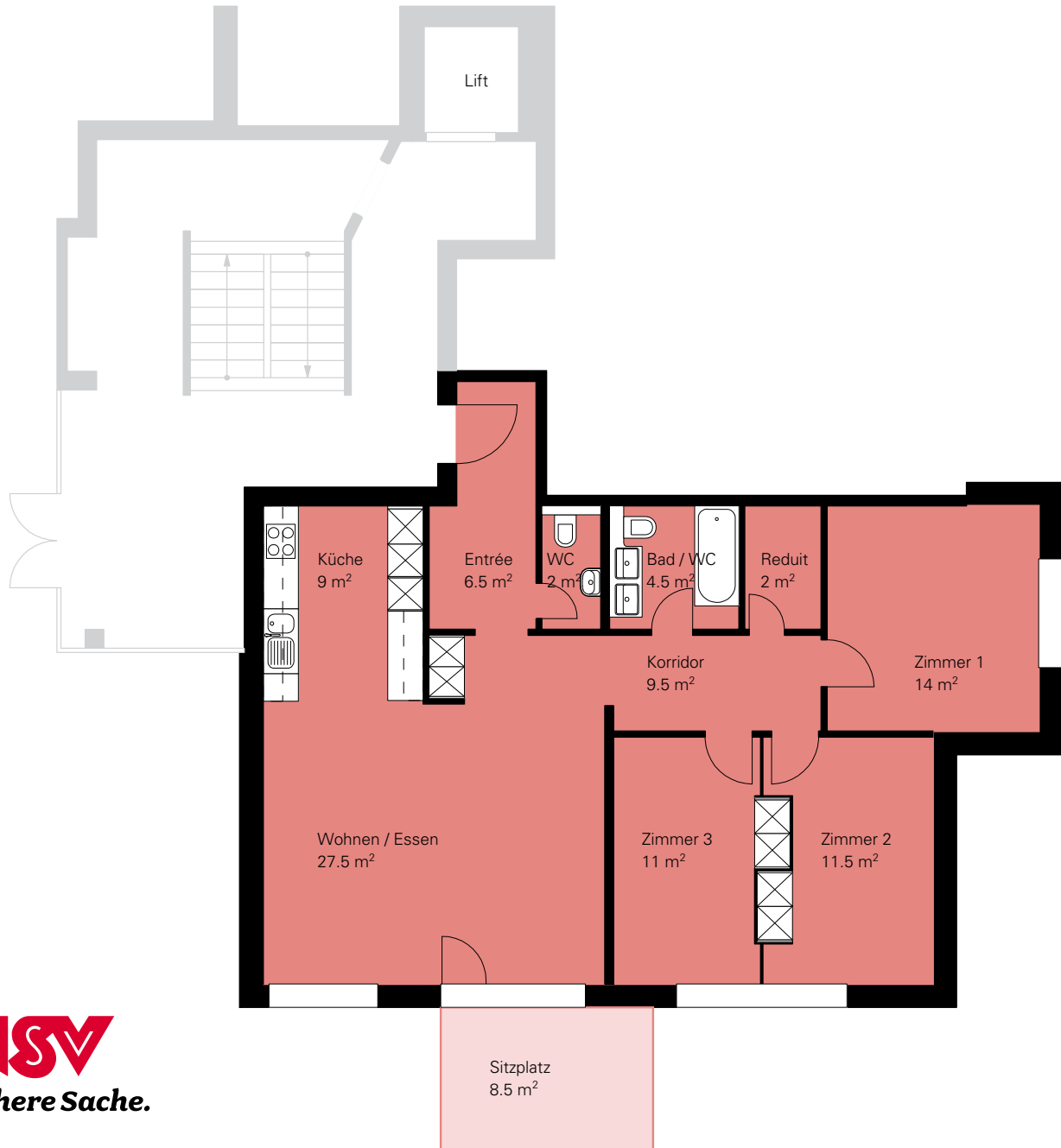
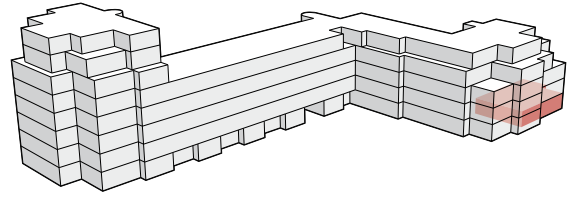
Erdgeschoss

### 4.5-Zimmer-Wohnung

NWF: 97.5 m<sup>2</sup>

Sitzplatz: 8.5 m<sup>2</sup>

Whg.-Nr.: 02.028



**NSV**  
**Sichere Sache.**

**Nidwaldner Sachversicherung**

Riedenmatt 1  
6370 Stans

Telefon 041 618 50 66

Fax 041 618 50 60

immobilien@nsv.ch

www.nsv-immobilien.ch/turmatthof



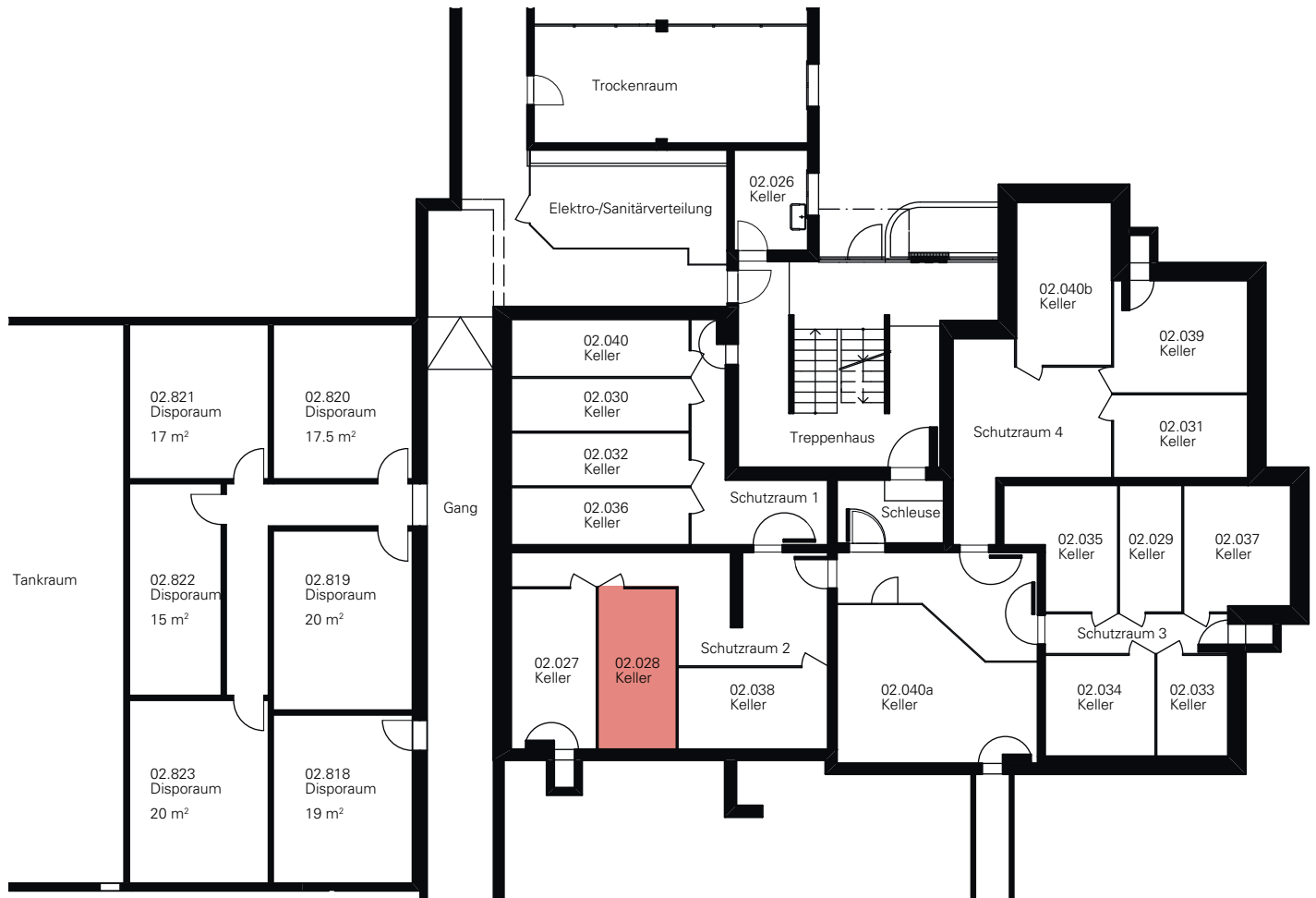
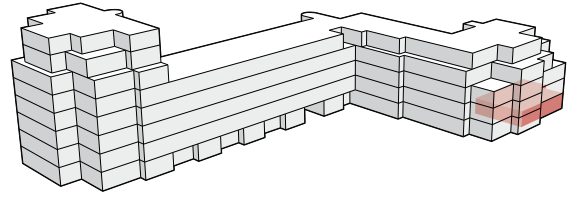
0m 1m 2m 3m 4m 5m

# TURMATTHOF 28

Untergeschoss

**Keller**

Whg.-Nr.: 02.028



**Sichere Sache.**

**Nidwaldner Sachversicherung**

Riedenmatt 1  
6370 Stans

Telefon 041 618 50 66

Fax 041 618 50 60

immobilien@nsv.ch

www.nsv-immobilien.ch/turmatthof



0m 2m 4m 6m 8m 10m